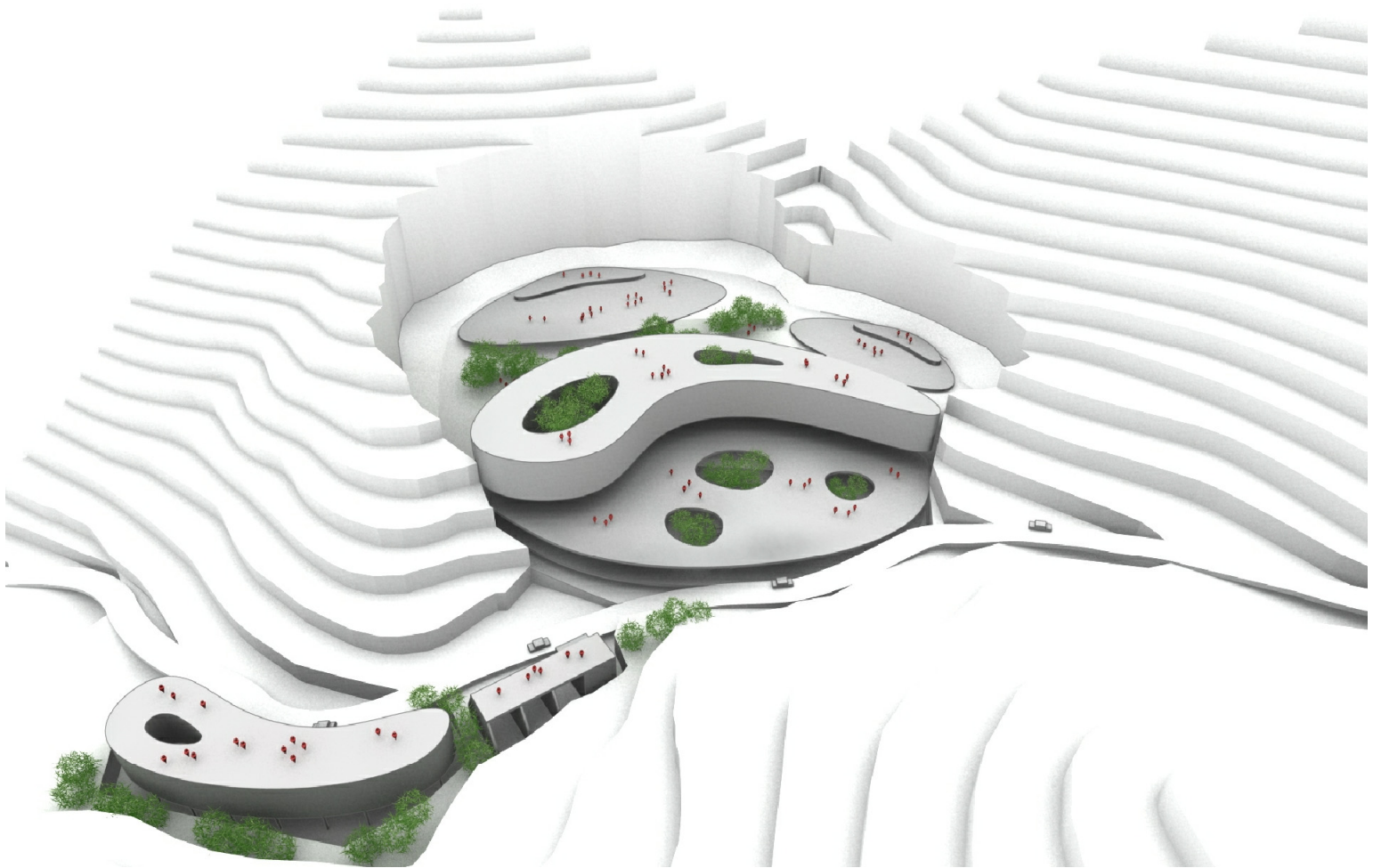
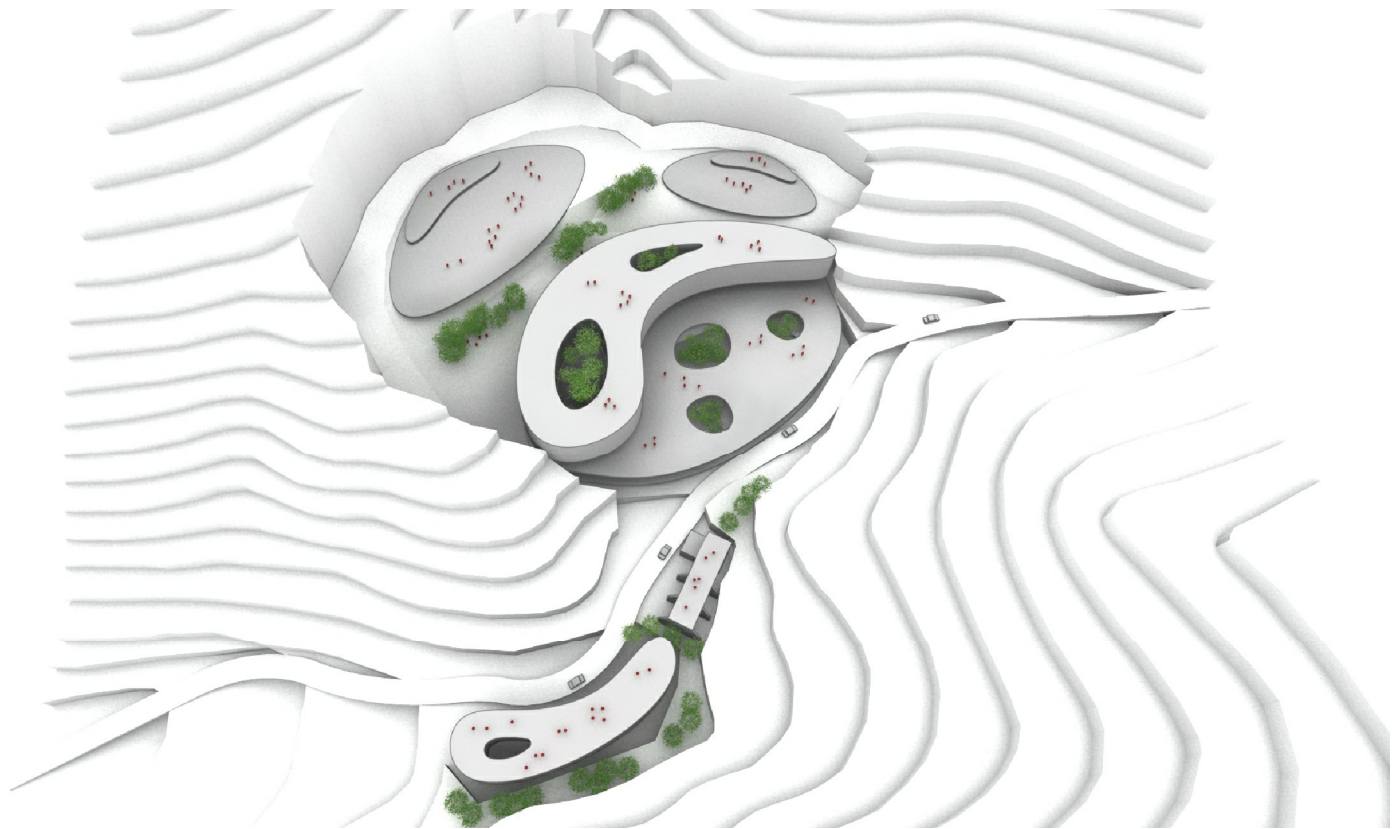


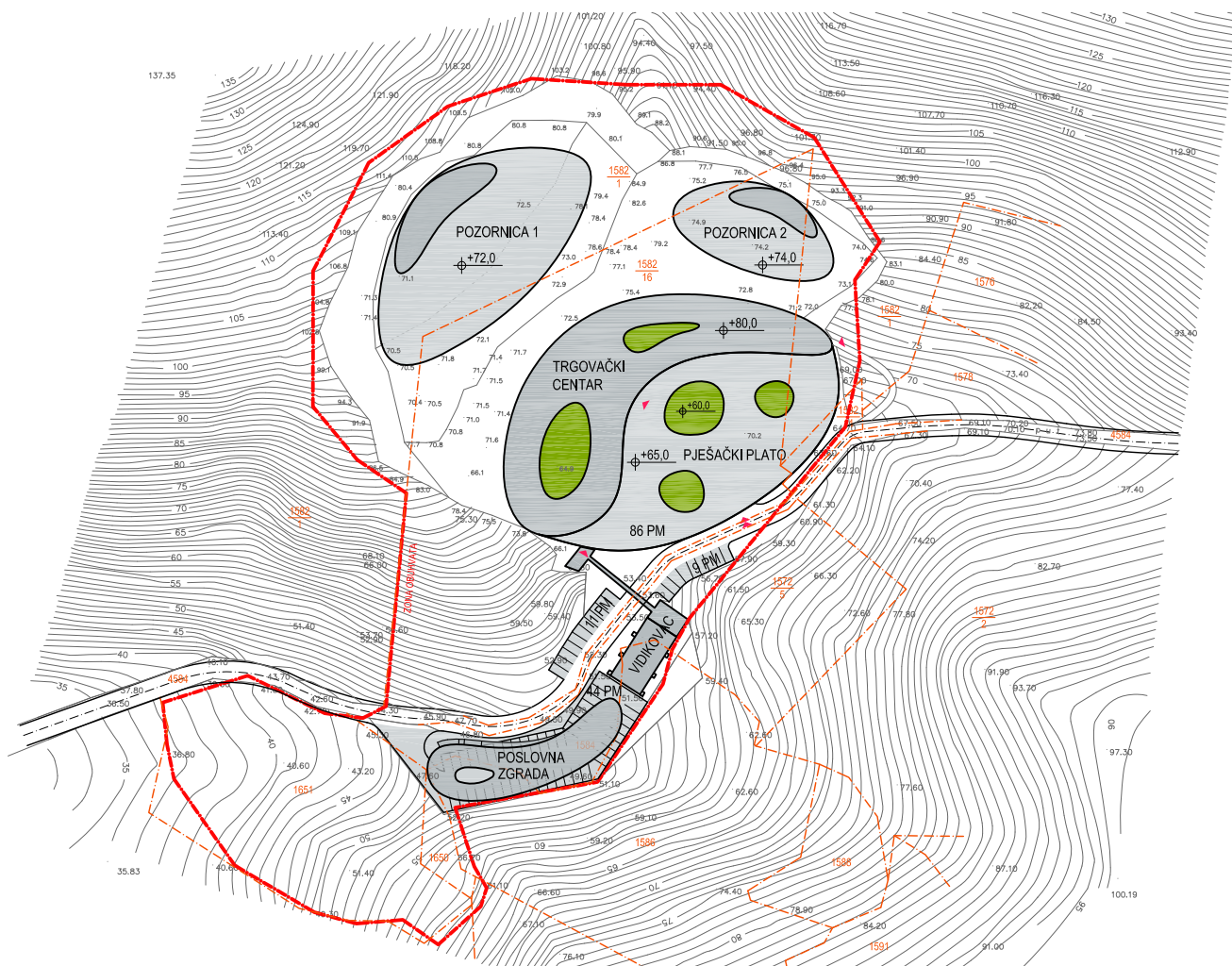
KAMENOLOM
PROPOD

HVAR

PROSTORNA STUDIJA







PROSTORNI POKAZATELJI:

površina obuhvata	26.490 m ²
površina pod izgradnjom	8.650 m ²
građevinska bruto površina	6.275 m ²

katnost	Po+P+2
izgrađenost	32,7%
koeficijent iskoristivosti (k _f)	0,24
broj parkirnih mjesta	150

GRAĐEVINSKA BRUTO POVRŠINA TRGOVAČKOG CENTRA:

PODRUM	
skladište i tehnika	460 m ²
parkiralište, vanjski prostor (2900 m ²)	0 m ²

PRIZEMLJE	
ulazni prostor	125 m ²
trijem, vanjski prostor (2200 m ²)	0 m ²
plato, vanjski prostor (2200 m ²)	0 m ²

1. KAT	
trgovački centar	2.210 m ²
2. KAT	
trgovački centar	2.120 m ²
UKUPNO GBP	4.915 m²

GRAĐEVINSKA BRUTO POVRŠINA POSLOVNE ZGRADE:

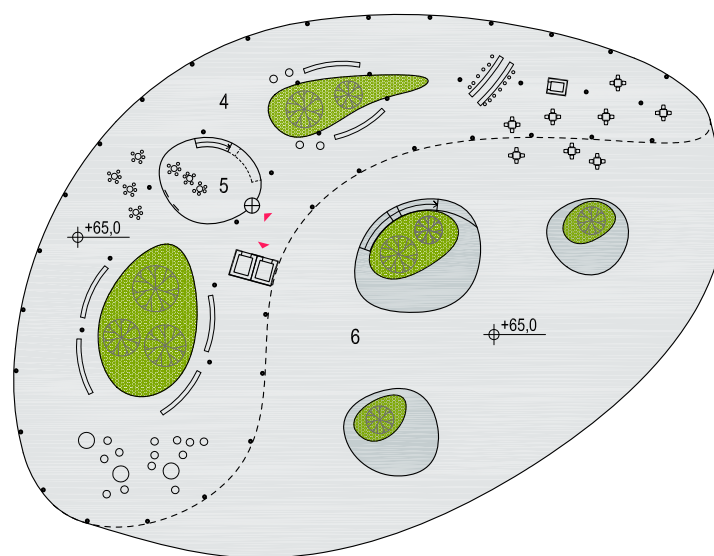
PRIZEMLJE	
uredski prostor	680 m ²
1. KAT	
uredski prostor	680 m ²
UKUPNO GBP	1.360 m²

LJETNE POZORNICE:

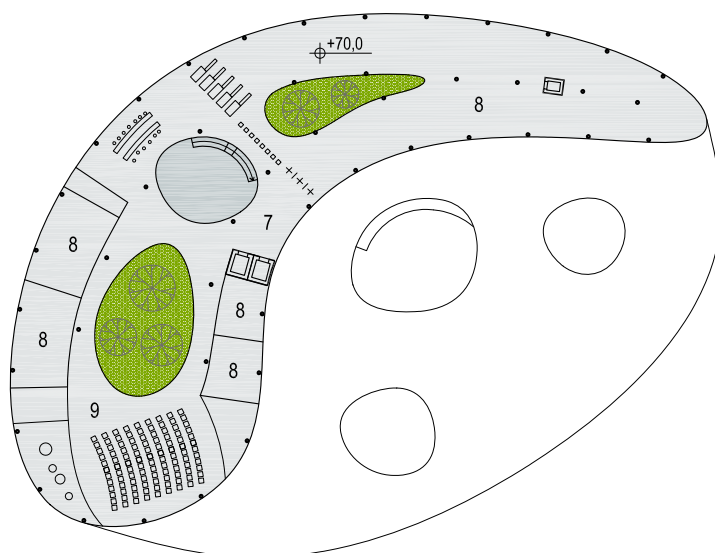
pozornica 1	2.350 m ²
pozornica 2	900 m ²



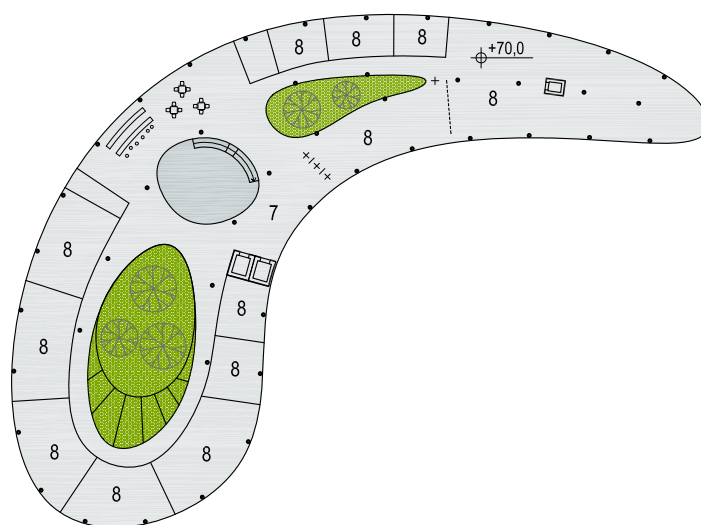
1 PARKIRALIŠTE / 2 SKLADIŠTE / 3 TEHNIKA



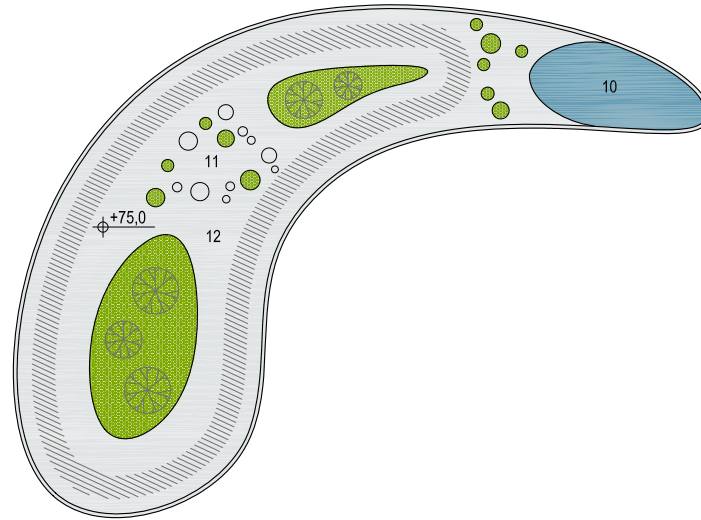
4 NATKRIVENI PROSTOR, CAFFE, IGRALIŠTE / 5 ULAZNI PROSTOR / 6 PJEŠAČKI PLATO



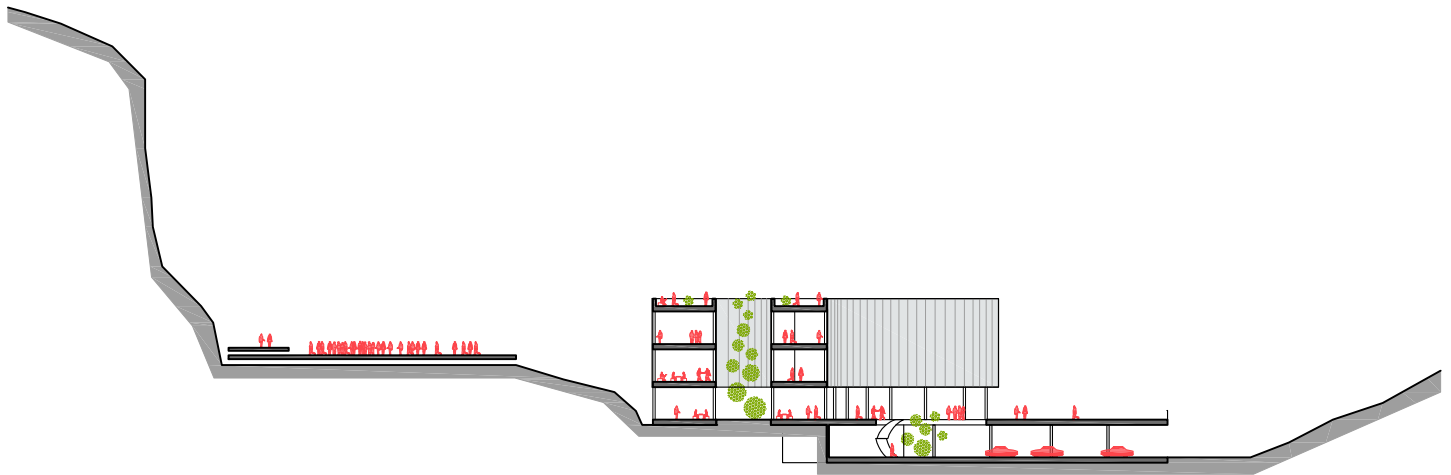
7 HALL, CAFFE / 8 LOKAL / 9 KINO, KAZALIŠTE



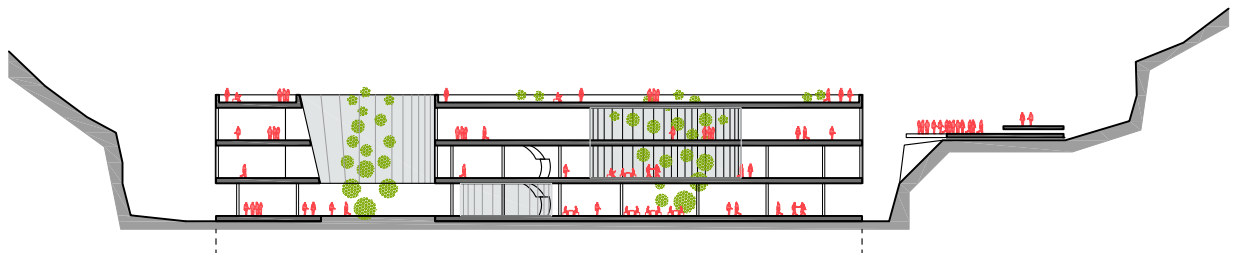
7 HALL, CAFFE / 8 LOKAL



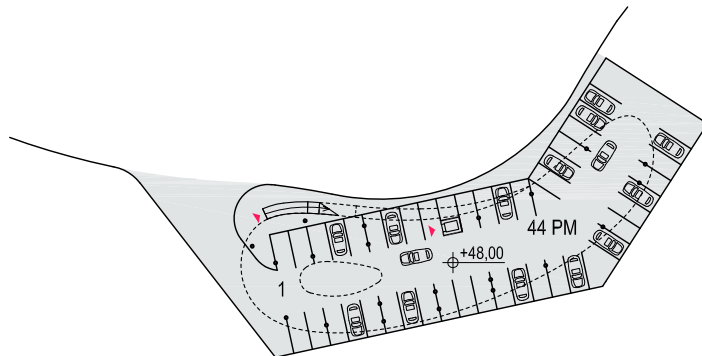
10 BAZEN / 11 IGRALIŠTE / 12 ŠETNICA, VIDIKOVAC



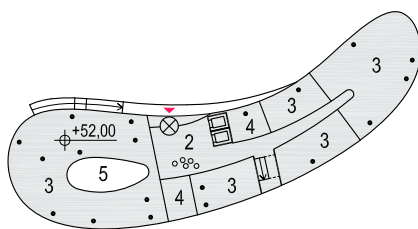
POPREČNI PRESJEK



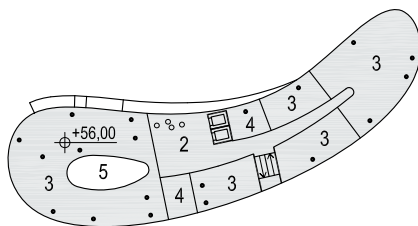
UZDUŽNI PRESJEK



1 PARKIRALIŠTE - PRIZEMLJE



2 ULAZNI PROSTOR / 3 UREDI / 4 SERVIS / 5 ATRIJ - 1. KAT



2 ULAZNI PROSTOR / 3 UREDI / 4 SERVIS / 5 ATRIJ - 2. KAT



PRESJEK

